

# Paul VAN DER EECKEN

KNO-arts

Dive Instructor

Divers Alert Network

*Algemeen Ziekenhuis Sint-Lucas*

*GENT - Belgium*

*+ 32 (0) 9 224 65 40 - 41*

[paul.vandereecken@azstlucas.be](mailto:paul.vandereecken@azstlucas.be)

[www.veiligduiken.nl](http://www.veiligduiken.nl)

---

zaterdag 7 november 2015

fit2dive

duikers en duikinstructoren

# CAVE ...

Zomer 2015 ...

4 IEBT (BinnenOor BaroTrauma) :

bij

- één-sters !
- twee-sters !
- OWD !

## Triade :

Gehoorsdaling, Tinnitus en Vertigo.

## Verder :

Onset van de symptomen,  
Pijn kan afwezig zijn

## Preventie :

Correct leren klaren,  
Uitademen langs de neus.

# CASE REPORT

---

## LAMINA PAPYRACEA Orbital emphysema

AV GC Nelos  
30 september 2015  
Lokeren

# FREEDIVE

Patrick Musimu “1970-2011”





That a diver who achieved depths in the 200m-range drowned in a 2m pool warrants close consideration by all divers.

If a diver of Patrick's accomplishments and experience can drown while pool training, it's clear that **no diver is experienced enough to train without a safety.**

All breath-hold activities in water require the supervision of a trained freediving safety diver.





50 jarige man,  
1m83,  
80kg,  
Gezond,  
Apnoe duiker,  
Scuba niveau AI.

- 1990 – 2012 : Scaphandrier Nitrox 50/50
- 2002 : Septoplastie
- Ervaren apneuduiker

## April 2015 :

- Apneuduiken in Sharm (Egypte) tot 60+m
- bij stijgen hevige pijn,
- op 3m « explosion dans l'œil »,
- aan oppervlakte emfyseem bovenste ooglid rechts,
- minimale diplopie,
- normale oogbewegingen

R/ na telefonisch contact : Breedspectrum AB,  
Nasale en Cortico per os, gestart in Egypte.



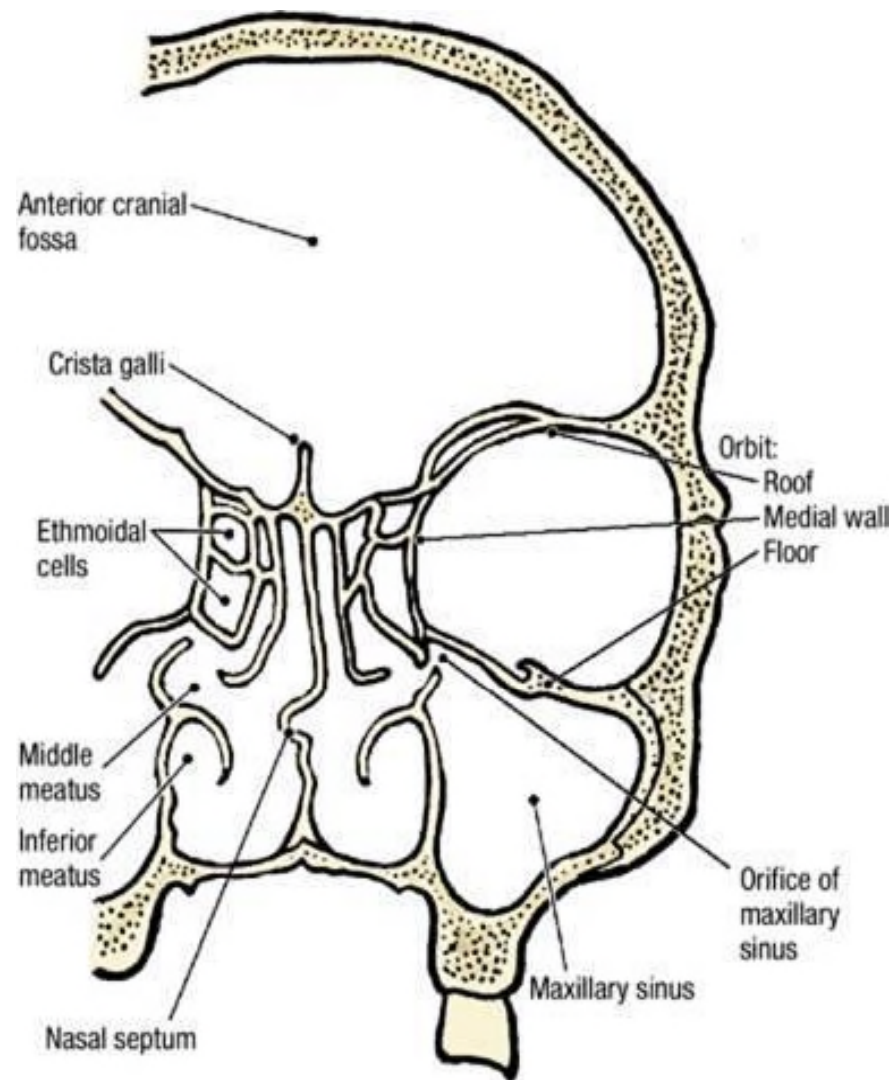


Figure 7.53. Coronal section of the skull to show the relationships of the orbit.

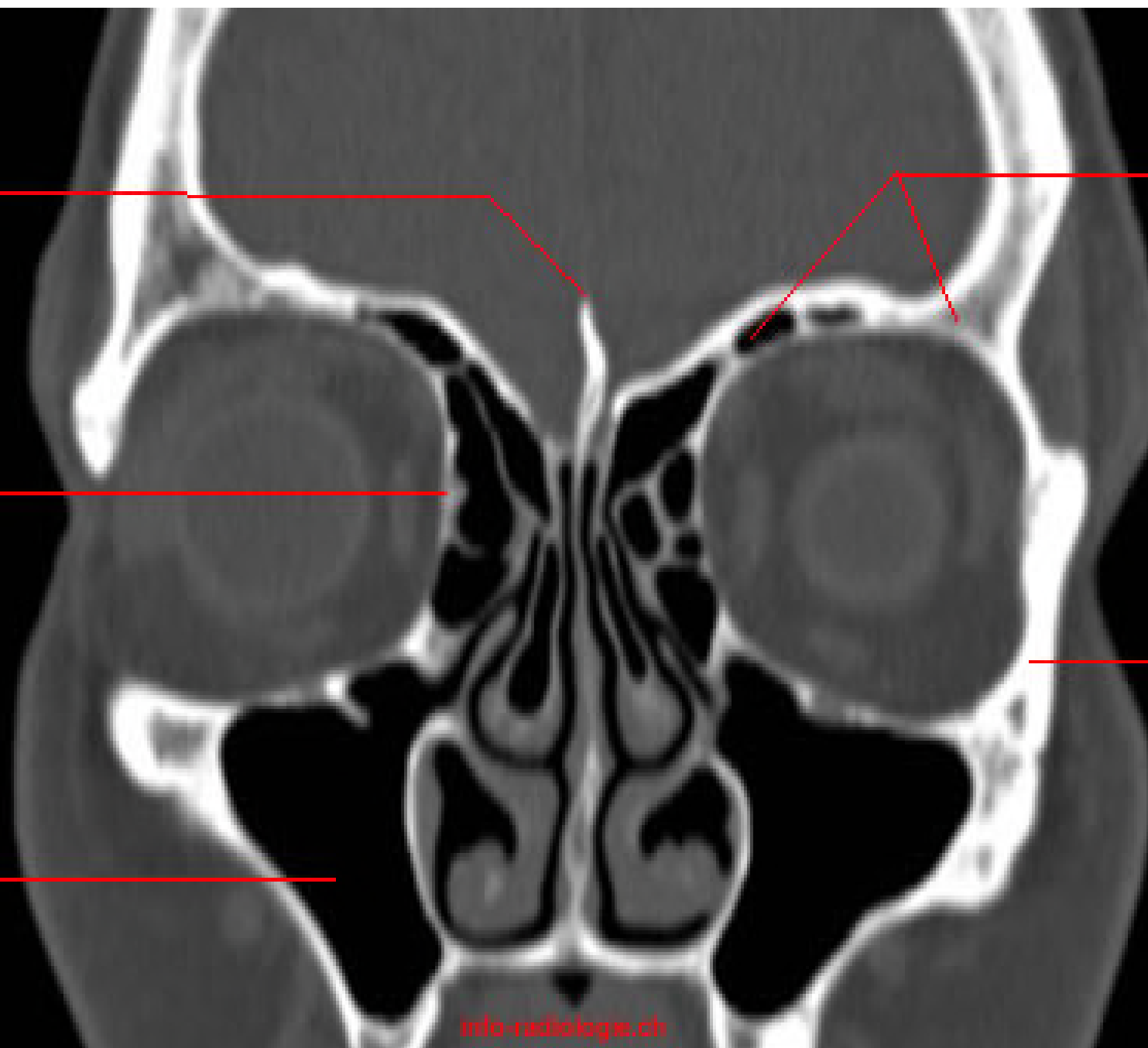
3

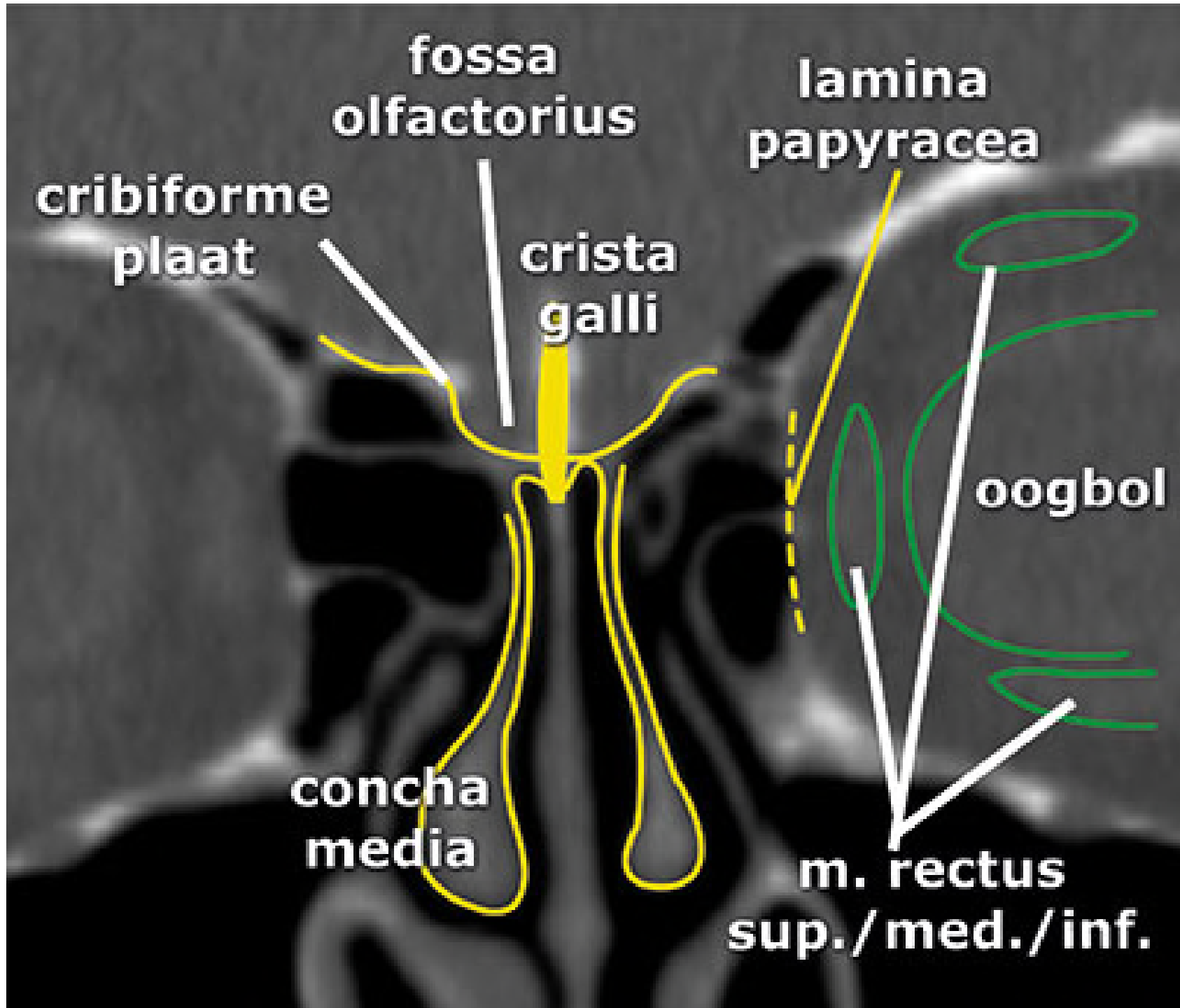
2

1

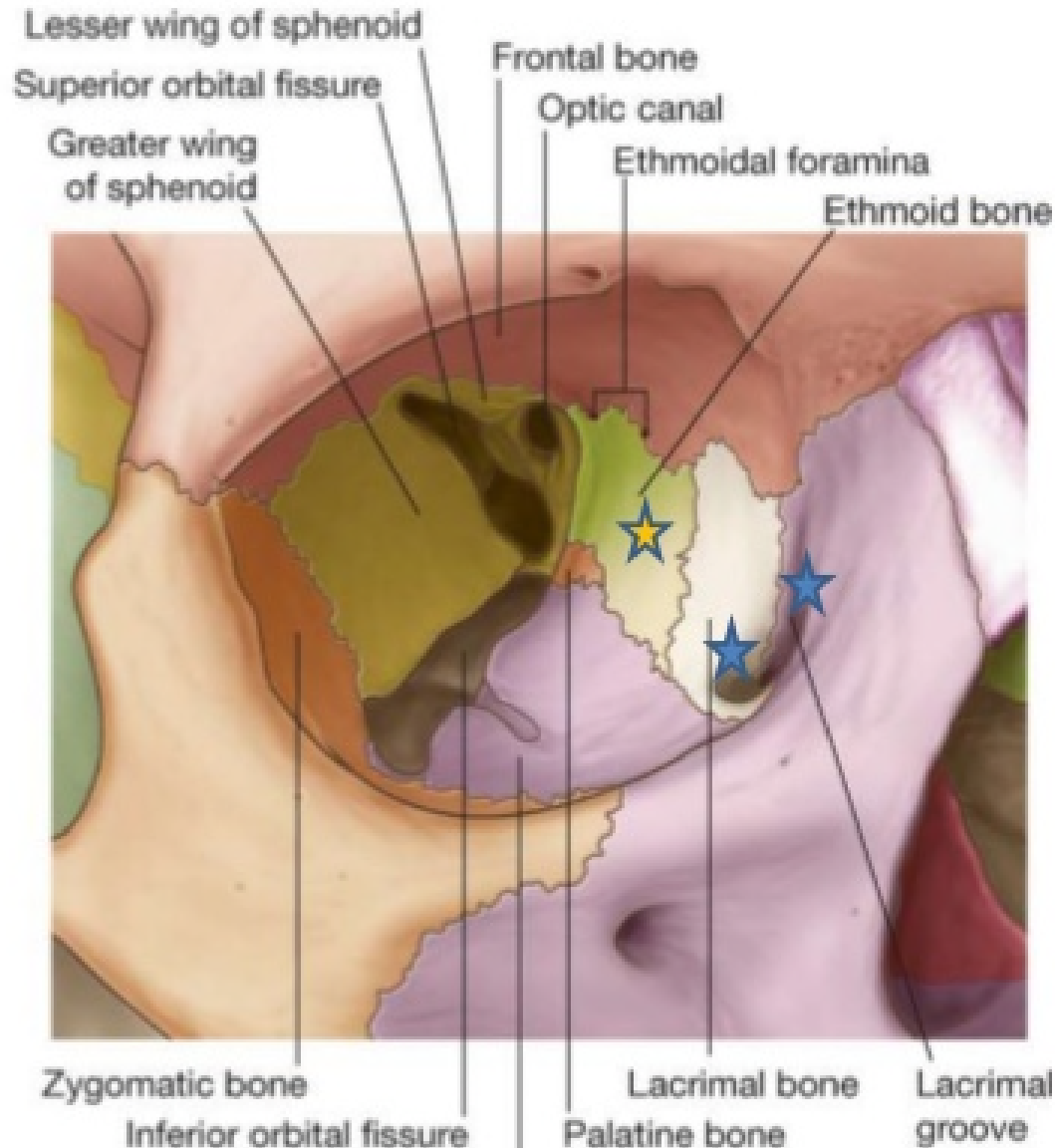
4

5





# Medial orbital wall



- Lacrimal groove ★
- Lamina papyracea ★
  - Medial blowout fracture\*
  - Spontaneous dehiscence of orbital fat
    - Into ethmoid sinus
- Sphenoid bone



# 1. Implosief :

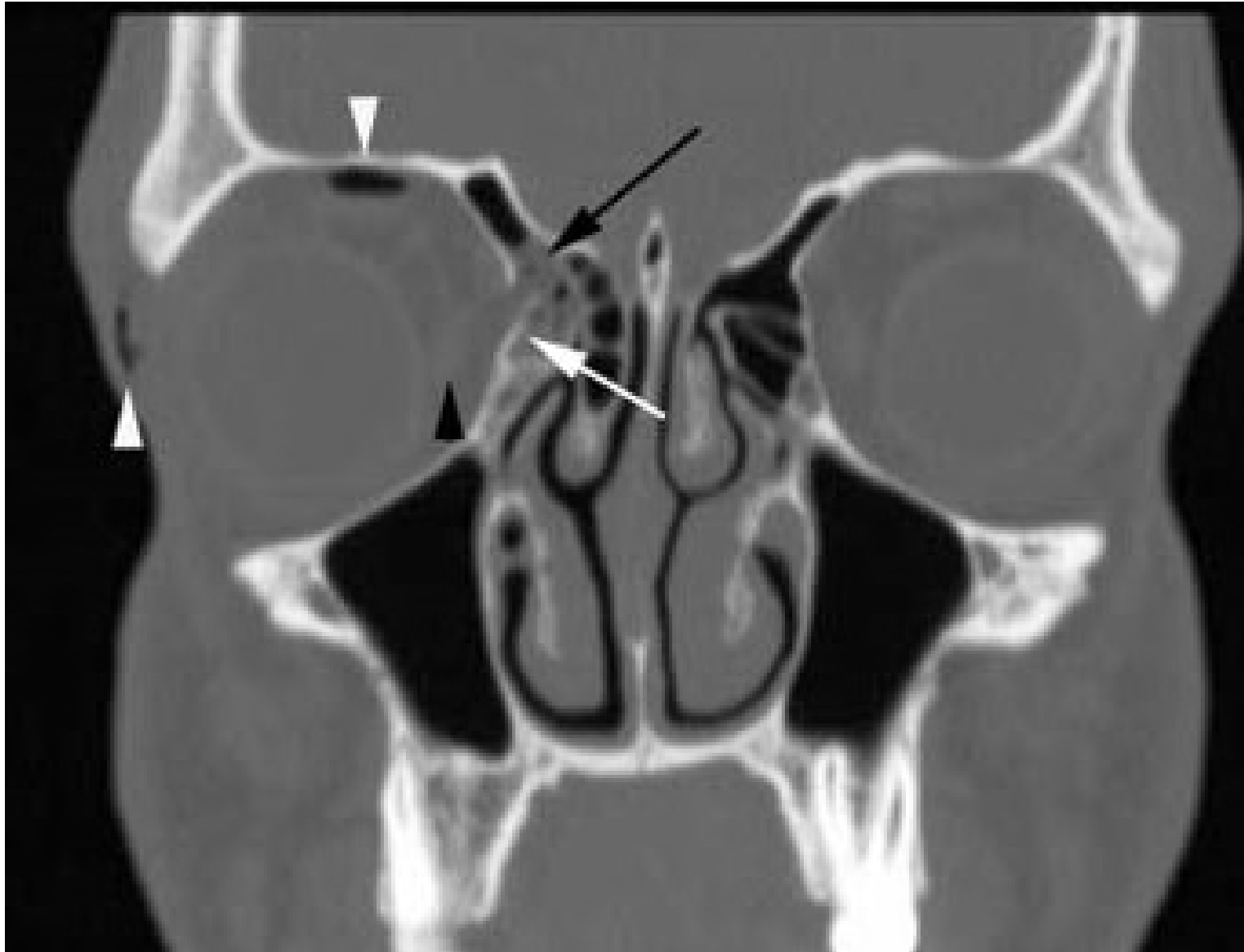
Trauma (tennisbal ...)

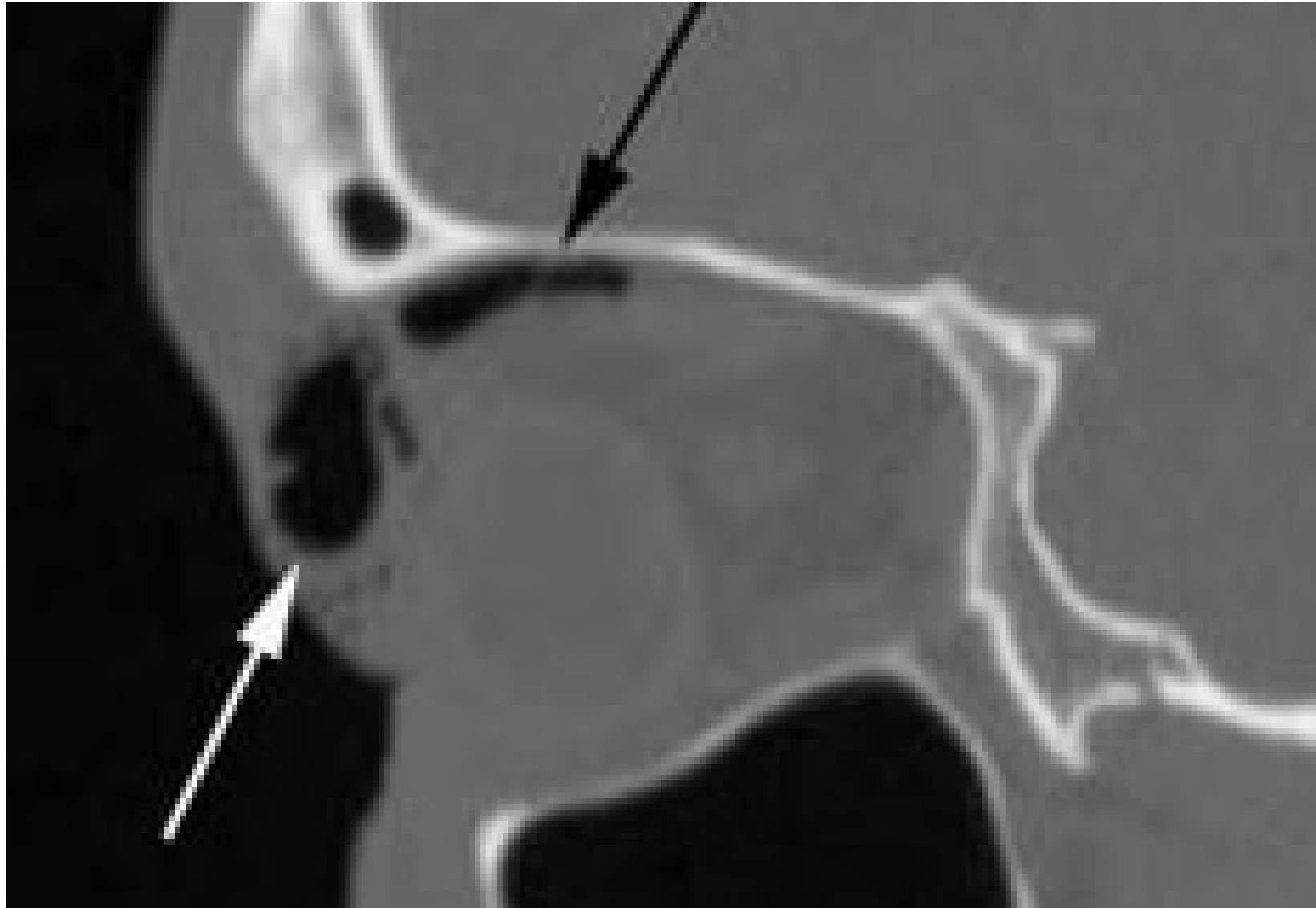
# 2. Explosief :

freedive

SCUBA

















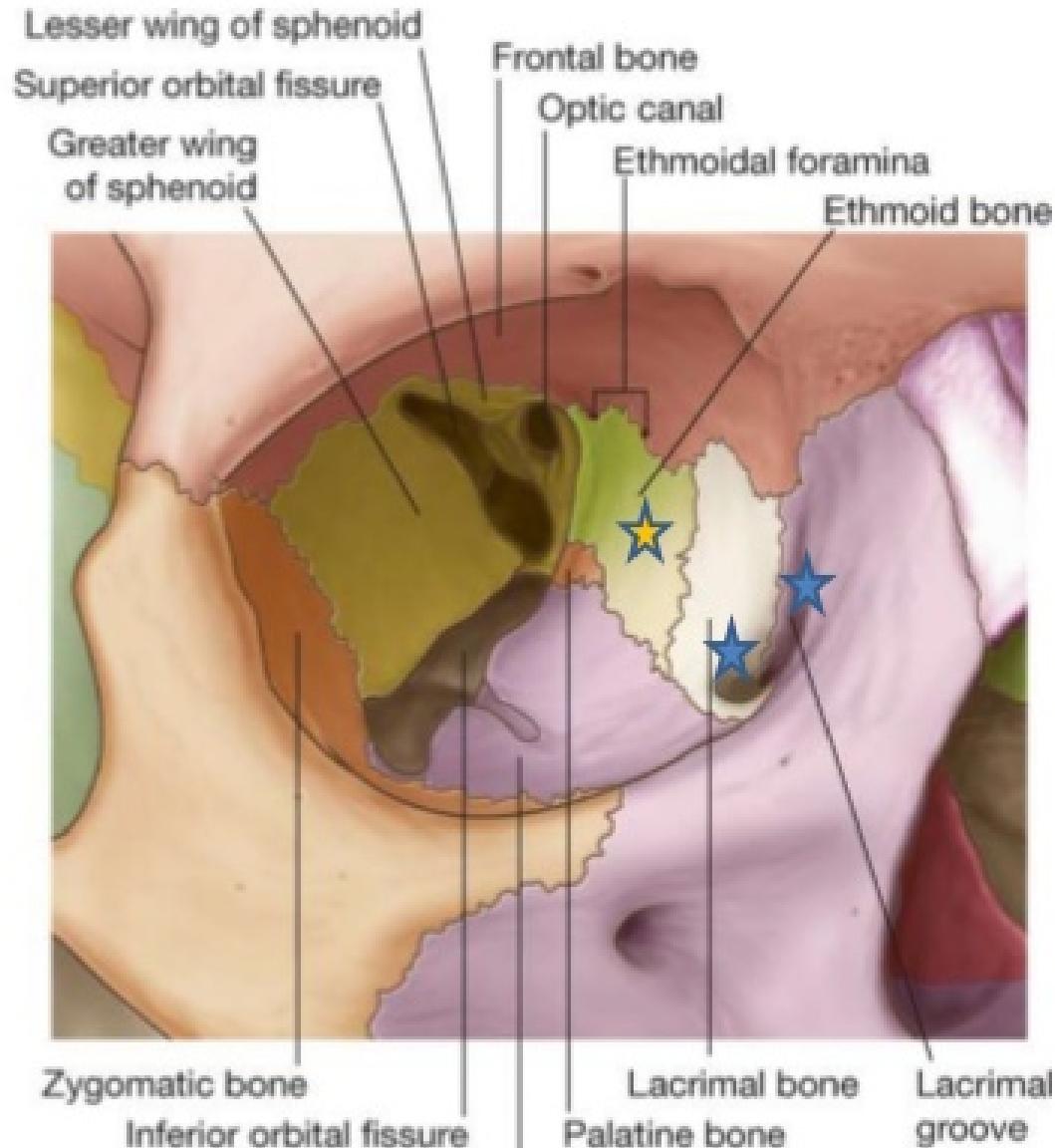








# Medial orbital wall



- Lacrimal groove ★
- Lamina papyracea ★
  - Medial blowout fracture\*
  - Spontaneous dehiscence of orbital fat
    - Into ethmoid sinus
- Sphenoid bone



Nog een prettig  
weekeinde !

